

# OPAQUE WINDOW CLING INSTRUCTIONS

## Product Parts

1. Opaque Window Cling

2. Tape (suggested: NOT INCLUDED)

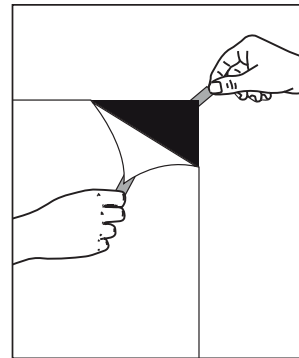
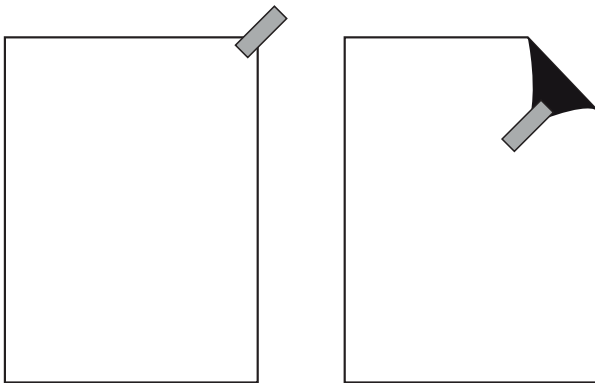


## Set-Up

### Step 1

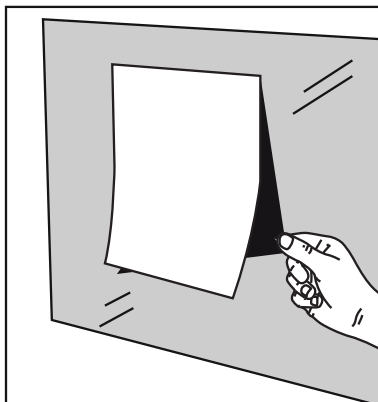
Attach a piece of Tape (2) to the front corner of the Window Cling (1) and another on the backside of the same corner. Make sure the tape pieces do not stick together.

Hold each piece of tape and peel a corner of the Window Cling (1) away from the backer. Backer will be needed for storage after use  
**DO NOT THROW AWAY.**



### Step 3

On a clean, dry window attach the exposed corner of the Window Cling (1) to the window and smooth out any air bubbles as you slowly and carefully peel away the backer, attaching the entire Window Cling (1).



## Care, Removal and Storage

Window can be cleaned with standard window cleaner while Window Cling is attached.

Removal: Window Cling will easily peel off the window leaving no residue.

Storage: Window Cling can be placed back on the original backer and then stored in a clean, dry place.